

The background of the slide is a dark, atmospheric photograph. In the lower-left corner, three lit candles are visible, their flames casting a soft glow. Wisps of white smoke or steam are rising from the candles and drifting across the bottom of the frame. The overall mood is somber and mysterious.

# The Wake Up Call PITCH DECK

By Evie, Madi and Alina

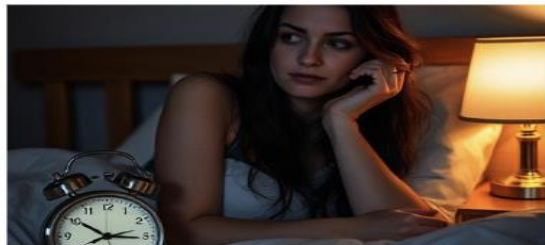


# THE WAKEUP CALL

BY MADI, EVIE, ALINA

## WHAT HAPPENS

FRAME 1



### Alinas Dream

Alina is woken up abruptly, the alarm clock then suddenly goes off and scares Alina. This creates a motif of time, and foreshadows the constant use of the clock.

FRAME 2



### Fight Against Time

The camera then pans to a clock that is speeding rapidly. Which creates a sense of lost time

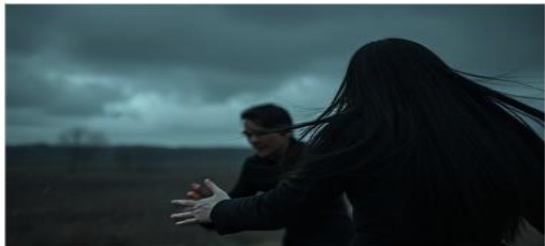
FRAME 3



### The Un-wanted Visitor

A shady man then knocks on the door three times, before the camera pans to him holding a knife. This creates a sense of uncertainty, and fear of what might happen next.

FRAME 4



### The Chase

Then the camera pans to Alina running force fulling through a forest attempting to get away from the man trying to hunt her.

FRAME 5



### The Catch

The camera then flips to the mysterious man putting Alina aggressively into the boot whilst she is unconscious

FRAME 6



### The Drive

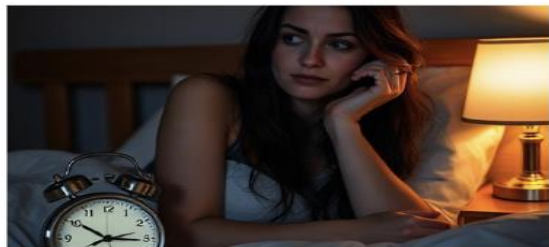
Finally, we cut to the car driving away to end the scene

# THE WAKEUP CALL

BY MADI, EVIE, ALINA

SOUND

FRAME 1



## Alinas Dream

It will begin with the muffled gasps on Alina waking up from what the audience thinks is a bad dream. Then the alarm goes off aggressively.

FRAME 2



## Fight Against Time

Then we still hear the alarm going off

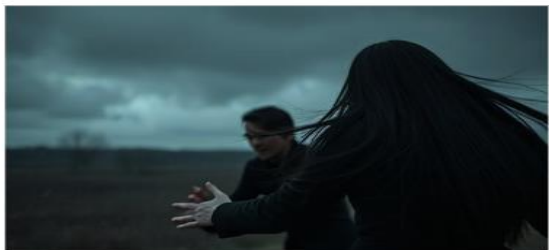
FRAME 3



## The Un-wanted Visitor

Then the audience hears three knocks on the door which creates a scary atmosphere

FRAME 4



## The Chase

Then we hear muffled screams from Alina followed by loud footsteps.

FRAME 5



## The Catch

Then we hear the boot shutting aggressively

FRAME 6



## The Drive

Finally, we hear the car zooming off in the distance

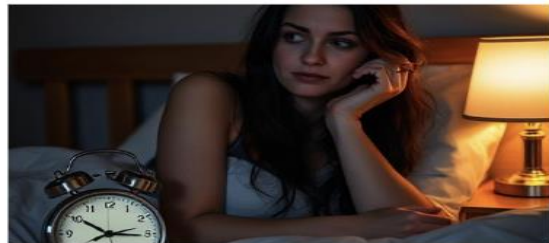


# THE WAKEUP CALL

BY MADI, EVIE, ALINA

**COSTUME**

FRAME 1



## **Alina's Dream**

Alina is wearing pjs and the alarm is the prop from this scene

FRAME 2



## **Fight Against Time**

The prop is the clock

FRAME 3



## **The Un-wanted Visitor**

The man is wearing all black with the knife as the prop

FRAME 4



## **The Chase**

The man is still wearing all black and Alina is still wearing pjs with no prop

FRAME 5



## **The Catch**

The car is the prop and the man is still in all black and Alina is still in pjs

FRAME 6



## **The Drive**

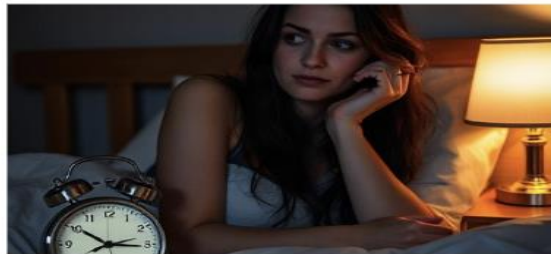
Finally, the prop is the car

# THE WAKEUP CALL

BY MADI, EVIE, ALINA

## LIGHTING

FRAME 1



### Alinas Dream

the lighting is natural and the lamp

FRAME 2



### Fight Against Time

The lighting is the ominous glow from behind the clock

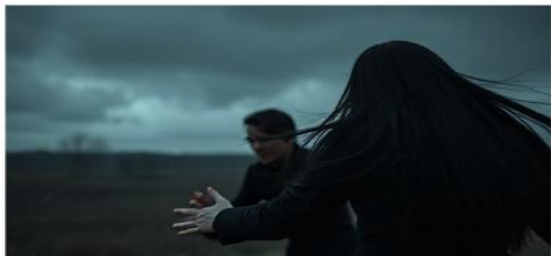
FRAME 3



### The Un-wanted Visitor

The lighting is natural

FRAME 4



### The Chase

The lighting is natural

FRAME 5



### The Catch

The soft glow from inside of the car and natural lighting

FRAME 6



### The Drive

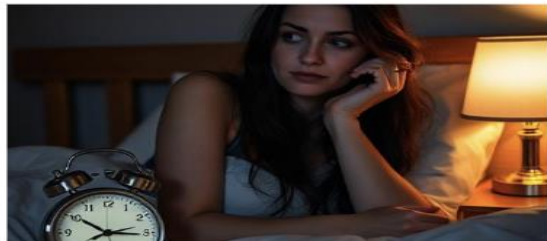
Finally, the lighting is natural

# THE WAKEUP CALL

BY MADI, EVIE, ALINA

## CAMERA ANGLES

FRAME 1



### Alinas Dream

We begin with an aerial shot of the vast, golden field stretching out as far as the eye can see. The camera then zooms in to show a woman running through the barley.

FRAME 2



### Fight Against Time

The camera zooms in on the crystal ball as it begins to glow, illuminating the woman's face. The camera then pans back to show the woman running, with the crystal ball.

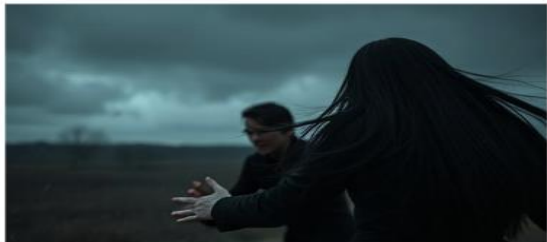
FRAME 3



### The Un-wanted Visitor

The camera zooms in on the crystal ball as she lifts it high above her head, causing the sunlight to reflect off of its surface.

FRAME 4



### The Chase

The camera zooms in on the ball as she lifts it up to her face, staring into its depths. As she gazes into it, the camera slowly rotates around her.

FRAME 5



### The Catch

We zoom in to capture the glow of the car as well as natural light.

FRAME 6

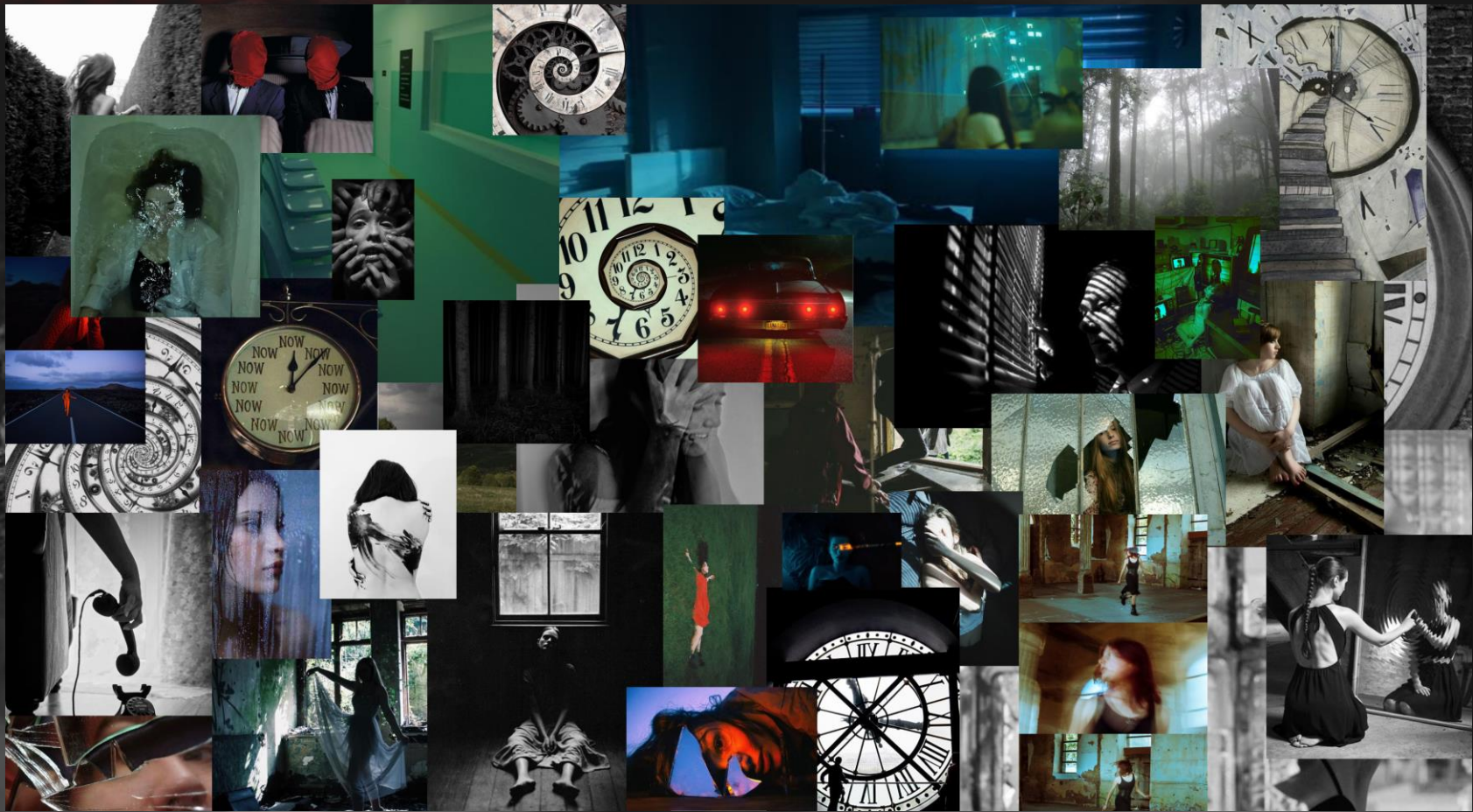


### The Drive

Finally, its a far away shot



# MOOD BOARD





# Brief Plot Summary

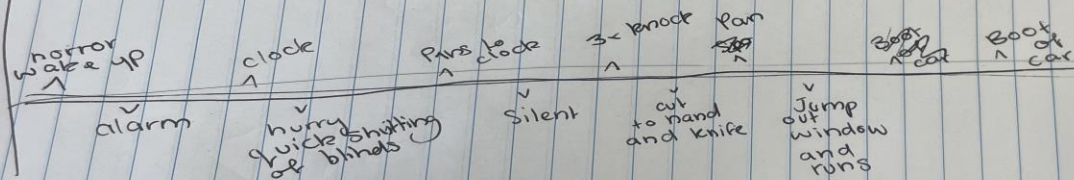
Our Story starts in a room, with a colour scheme of darker colours and a girl fast asleep. She wakes up abruptly with a look of fear in her eyes. A second passes and a loud alarm starts to blast, as the camera pans to a clock the alarm becomes background noise and the audience just focuses on the clock's out of control clockwise spin. She's running around frantically and then it pans back to the clock - the screen goes silent and the camera switches to a shot of three knocks and a man with a knife

# Original Brainstorm

Setting: rainy day  
common room  
forest

Theme  
↳ aggression → dramatic  
~~↳ a shock~~  
message  
↳ stay awake  
↳ never safe

colour Scheme and textures → Blue, Green, Red  
lighting → natural lighting  
character → man and girl  
cinematography → diff angles



no speaking = tension

# Acknowledgements

<https://deepai.org/>

<https://magichour.ai/create>

<https://www.canva.com/design/DAGgDrwNCiw/cfoYyn7oHbpCYV2KelcExQ/edit>

<https://nz.pinterest.com/>



# OUR TEAM



**EVIE**

Brainstorm on paper and online, Story Ideas and the wonderful powerpoint



**MADI**

Storyboard, brainstorm and story ideas as well as title name. In charge of the Ai photos.



**ALINA**

Created the mood board, helped with editing the powerpoint and introduced some story ideas



# OUR TEAM (mafia style) and what ai thought we would look like



EFIA

Smuggling. HITMAN



MAFIA

Money laundering, drug  
trafficking. OWNER



AFIA

Illegal gambling. WINGMAN

